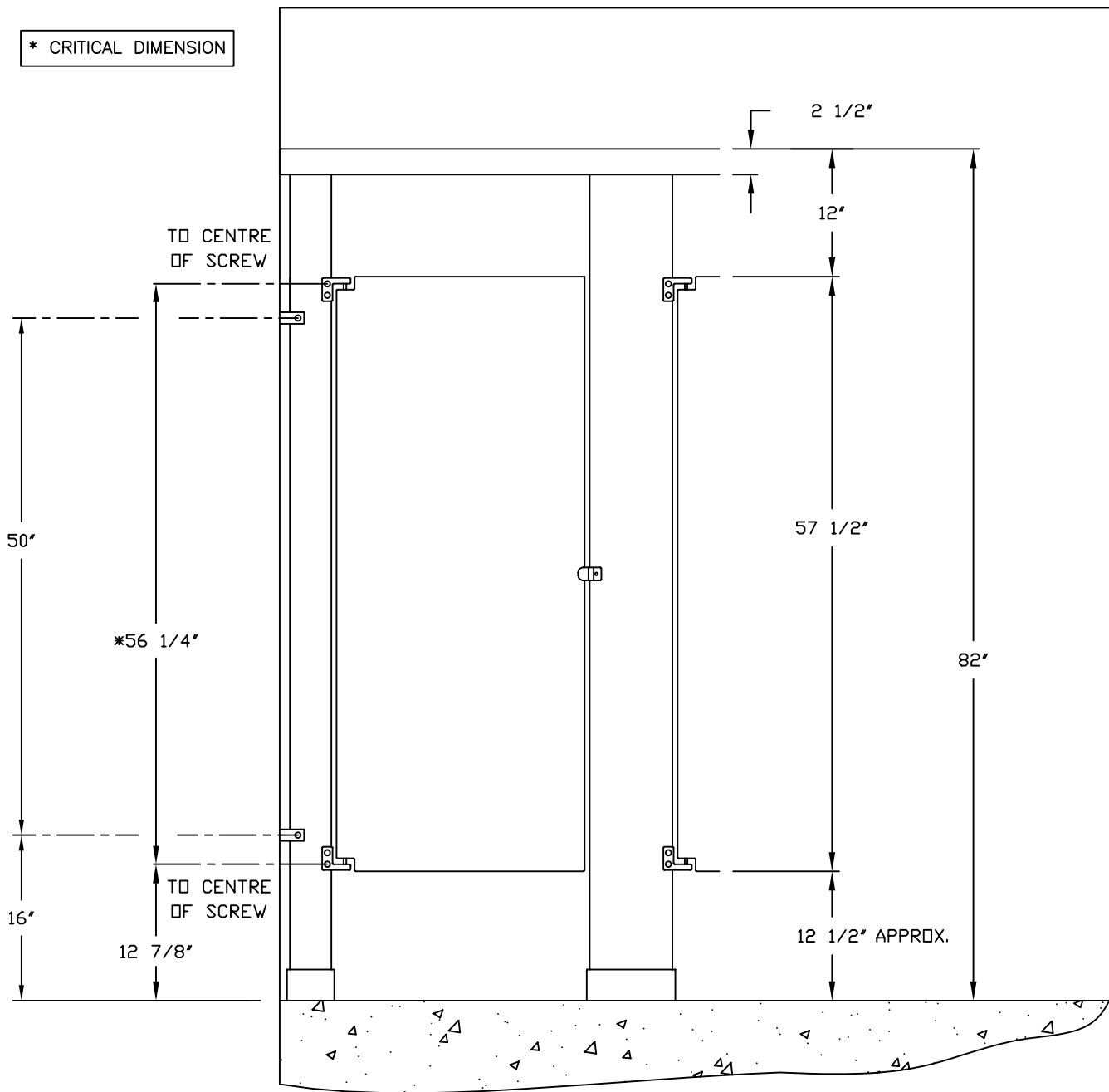


# EPIC – HEADRAIL BRACED

\* CRITICAL DIMENSION

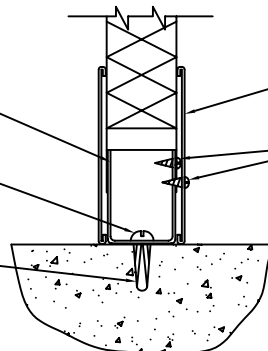


**NOTE:** PLEASE ADVISE LOCATION OF DOOR PULL

FLOOR CHANNEL 18 GA.  
ALLOWS ADJUSTMENT

#14 x 2" ROBERTSON #3  
(107-316)

#14 x 1 1/2" PLASTIC  
ANCHOR (909-301)



3" STAINLESS STEEL SHOE

#8 x 1/2" ROBERTSON  
#3 S.M.S. (107-316)

**IMPORTANT** GENERAL CONTRACTORS  
TO INSTALL 3 1/2" WOOD BLOCKING  
BEHIND DRYWALL OR PLASTERED  
WALLS FOR PANEL BRACKETS

\*\* POLISHED CLEAR ANODIZED ALUMINUM

GENERAL STORAGE SYSTEMS

PRINTED IN CANADA  
FORM# 2A.2 07/05