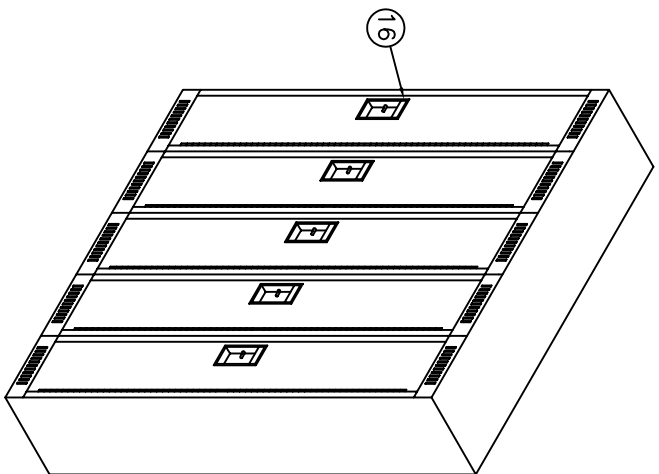


SMARTLINE FLUSH DOOR LOCKER PARTS

NO.	DESCRIPTION	GAUGE
1	BACK PANEL	24
2	SIDE PANEL (REVERSIBLE)	24
3	TOP, BOTTOM & HAT SHELF	24
4	DOOR STRIKE FRAME	16
5	DOOR (LINER 24 GAUGE)	20
6	HASP	12
7	STAINLESS STEEL POCKET	
8	CONTINUOUS HINGE & FRAME	16
9	RIVET	
10	COAT HOOK	
11	DOOR BUMPER - 2 PER DOOR	
12	#8 x 5/8" BOLT & NUT	
13		
14		
15		
16	NUMBER PLATE & DOOR PULL	
EXTRA & SPECIAL PARTS		
27		
28		
DIM "A"	DIM "B"	DIM "C"



COLOURS

DOORS: BEIGE OR WEDGEWOOD BLUE

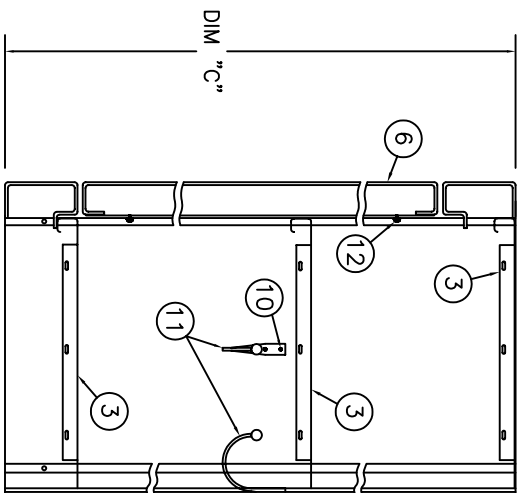
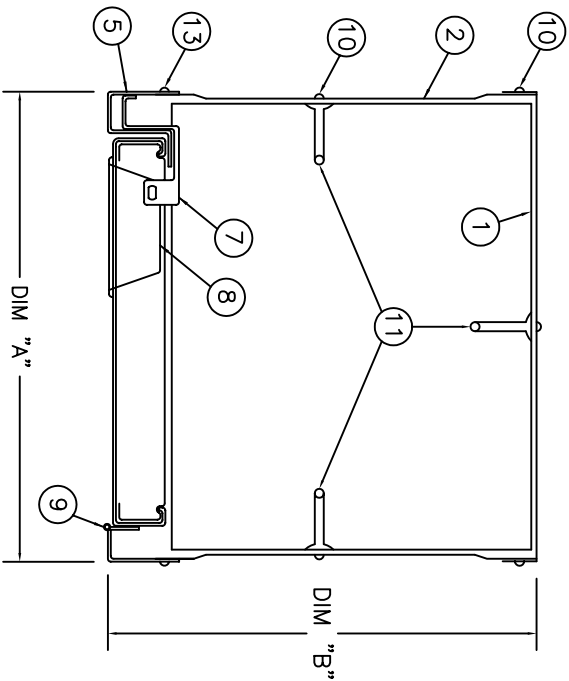
FRAMES: CHARCOAL

BODIES: PREPAINT OYSTER

SIZES

12W x 15D x 72H

12W x 18D x 72H



GENERAL STORAGE SYSTEMS

2995 PAGE STREET, LONDON

ONTARIO, CANADA, N5V 4P6

PHONE: (519) 453-5910

FAX: (519) 455-0037

P.O. BOX 583, O'FALLON

MISSOURI, U.S.A. 63366

PHONE: (314) 517-6975

FAX: (636) 379-0088

PROJECT:

STYLE:
TYPICAL SINGLE TIER
SMARTLINE LOCKER

CUSTOMER:

QUOTE NO:

ARCH/ENG/CONT:

REVISION NO:

DATE: MARCH 30, 2006

SCALE: NOT TO SCALE

DESIGNED BY:

APPROVED BY:

DRAWN BY:

DRAWING No.:

SHEET 1 OF 1

DIMENSIONS MUST NOT BE SCALED,
ALL MEASUREMENTS MUST BE
CHECKED AND VERIFIED AND ALL
ERRORS SHALL BE REPORTED TO GSS
PRIOR TO PROCEEDING WITH JOB.

ALL PRINTS OF SPECIFICATIONS AND
PLANS ARE THE PROPERTY OF
GENERAL STORAGE SYSTEMS MFG LTD
AND NOT TO BE COPIED OR USED
WITHOUT WRITTEN PERMISSION.