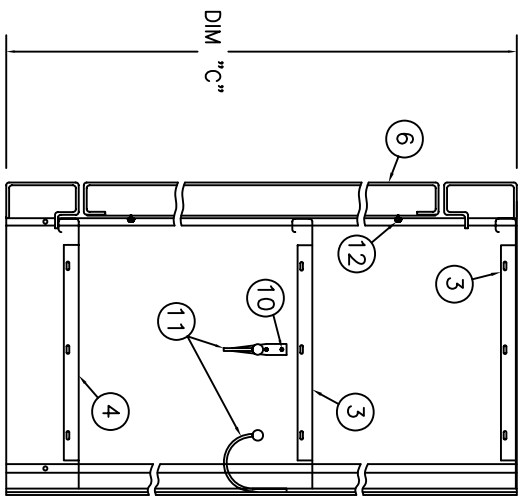
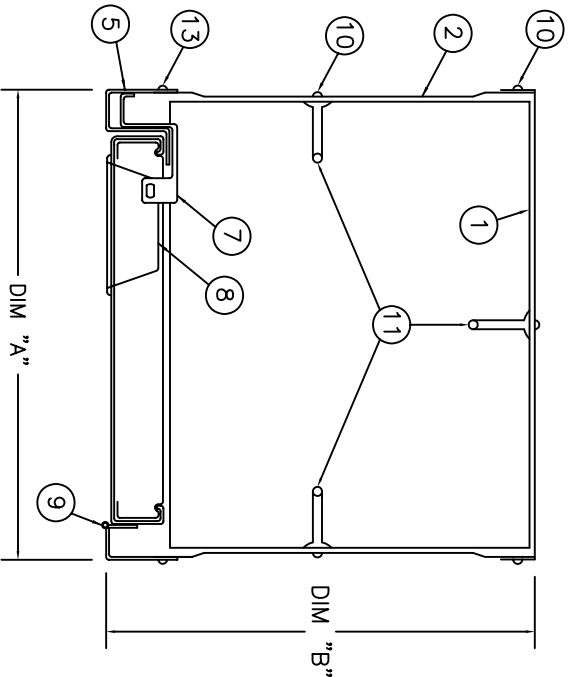
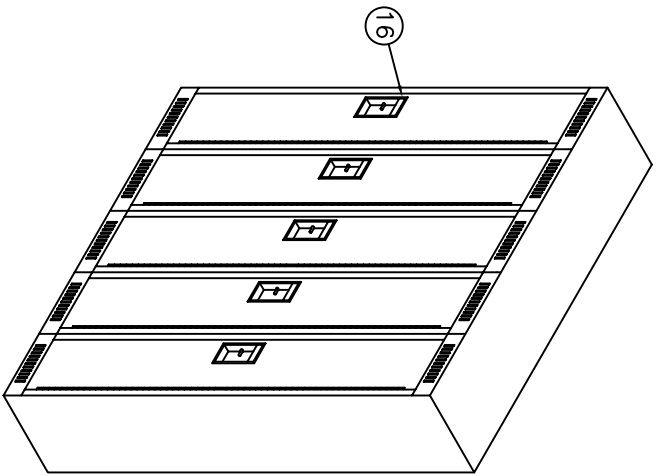


ECLIPSE FLUSH DOOR LOCKER PARTS

NO.	DESCRIPTION	GAUGE
1	BACK PANEL	24
2	SIDE PANEL (REVERSIBLE)	24
3	TOP & HAT SHELF	24
4	BOTTOM SHELF	24 (OPTIONAL UPGRADE TO 16 GAUGE)
5	DOOR STRIKE FRAME	16
6	DOOR (LINER 24 GAUGE)	16
7	HASP	12
8	STAINLESS STEEL POCKET	
9	CONTINUOUS HINGE & FRAME	16
10	RIVET	
11	COAT HOOK	
12	DOOR BUMPER - 2 PER DOOR	
13	#8 x 5/8" BOLT & NUT	
14		
15		
16	NUMBER PLATE & DOOR PULL	
EXTRA & SPECIAL PARTS		
27		
28		
	DIM "A"	DIM "B"
		DIM "C"



GSS
GENERAL STORAGE SYSTEMS

2995 PAGE STREET, LONDON
ONTARIO, CANADA, N5V 4P6
PHONE: (519) 453-5910
FAX: (519) 455-0037

P.O. BOX 583, O'FALLON
MISSOURI, U.S.A. 63366
PHONE: (314) 517-6975
FAX: (636) 379-0088

PROJECT:

STYLE:
TYPICAL SINGLE TIER
ECLIPSE LOCKER

CUSTOMER:

QUOTE NO:

ARCH/ENG/CONT:

REVISION NO:

DATE: MARCH 30, 2006

SCALE: NOT TO SCALE

DESIGNED BY:

APPROVED BY:

DRAWN BY:

DRAWING NO:

SHEET 1 OF 1

DIMENSIONS MUST NOT BE SCALED,
ALL MEASUREMENTS MUST BE
CHECKED AND VERIFIED AND ALL
ERRORS SHALL BE REPORTED TO
PRIOR TO PROCEEDING WITH JOB.

ALL PRINTS OF SPECIFICATIONS AND
PLANS ARE THE PROPERTY OF
GENERAL STORAGE SYSTEMS MFG. LTD
AND NOT TO BE COPIED OR USED
WITHOUT WRITTEN PERMISSION.